

Closing the Loop on the Cordless Age

Cordless phones, cell phones, TV remotes, Ipods, clocks, radios, toys, hearing aides, pace makers, computers and peripherals, power tools, lawnmowers, toothbrushes, even greeting cards now carry their own miniature power plants. Take a moment to count the number of battery powered items that inhabit your life (hint: We purchase 3 billion dry cell batteries annually in the U.S.). In two minutes I came up with 50 items in my home!

Batteries use chemical reactions to create an electric current. Lead, sulfuric acid, mercury, cadmium, nickel, zinc, manganese, lithium, silver and organophosphates are used in different batteries. When discarded these heavy metals and salts leach from our landfills, vaporize when incinerated, and contaminate our ground water. The most toxic material in batteries today are lead in automotive batteries, mercury in some button batteries for medical devices, and Cadmium in Ni-Cd rechargeables (cordless phone, power tools, video cameras).

90% of all automotive batteries are recycled in the US and the lead and plastics recovered contribute to 65% of new batteries. Cadmium is a known carcinogen and Ni-Cd batteries. In the mid 1990s they accounted for 54% of the cadmium contamination in our landfills. In 1996, the U.S. congress enacted the Mercury-Containing and Rechargeable Battery Management Act which required manufacturers to provide recycling for rechargeable Ni-Cd and reduce mercury in batteries. The Rechargeable Battery Recycling Corporation (RBRC) was created and is funded by battery manufacturers. RBRC provides free collection, recycling, and educational material. FMI www.call2recycle.com. In 2001 the RBRC expanded the program to collect all rechargeable batteries. The rechargeable batteries collected in the Recycling Shed in Arrowsic are taken to the Bath Landfill where they are bagged and placed in a box. INMETCO/RBRC collects the batteries, sorts them by type in Ellwood City, PA, and distributes them for recycling. All the recycling occurs in the US and Canada. RBRC claims to have recycled 55 million tons of batteries since 1996.

Prior to 1996 single-use alkaline batteries contained significant amounts of mercury accounting for 88% of the mercury in our landfills. Mercury was replaced by manganese in the early 1990s. Mercury oxide button batteries are still in use in hearing aides and military

devices. These remain hazardous and must be recycled by approved hazardous waste sites. The EPA says the alkaline batteries are now non-toxic and safe for disposal. Still, 4/5 of the 3 billion batteries purchased in the US are non-rechargeable alkaline batteries containing zinc, manganese, potassium, lithium, or silver. The RBRC does not collect alkaline batteries because the cost of recycling them exceeds the profitability of the reclaimed material. However, if you consider 2.5 billion batteries going into our landfills annually it starts to look like a lot of wasted resource and accumulated toxins.

The Big Green Box is a program run by TOXCO in British Columbia. For \$63 they will send you a box to collect 43 pounds of alkaline batteries. TOXCO reclaims the zinc, manganese and steel from the batteries. Curious Arrowsic-ites have purchased a few boxes as a trial for Arrowsic that you can find in the Recycling Shed.

Please consider switching to rechargeables. Rechargeable alkaline batteries last 25 times longer than single-use alkaline batteries. Another very important step is to make sure all your batteries are recycled (taken out of obsolete or broken electronics before the item is discarded). Better yet, consider using tools that do not require battery power whenever possible.

Continued on page 4



The date and time of the Selectmen's meetings has returned to the 2nd and 4th Mondays of the month starting at 6 PM

Mark Your Calendar!

There will be a dedication and celebration of our new fire station and truck on June 5, 2011 at 2 PM at the new fire station.





News from RSU 1

The District has had a great deal going on since the start of school, with perhaps the most striking news being the resignation of our Superintendent, William Shuttleworth. During the December Board meeting, the Board was presented with a letter announcing William's resignation. He indicated that he will stay on until June in order to facilitate a smooth transition to the new Superintendent. I have had the opportunity to work with William both as Superintendent of RSU1 and of Union 47. Just to mention a few of William's accomplishments: under his leadership, we have witnessed the implementation of a Pre-K Program, a swim program, the increase in AP classes at Morse, an increase in graduation rate at Morse and the establishment of a non-profit entity called The Help-a-Kid Foundation. His energy, his passion for the work and his vision will be missed. Meanwhile, the Board will embark upon a search for a new leader for our district.

Another big change for RSU1 will be the swearing in of two new Board members during the January Board meeting. Robin Buczkowski will be replacing Charlie Durfee in District 1 and Alan Walton will be replacing former Arrowsic resident Francie Tolan in District 6. Both members will be missed for their insightful and even-keeled approach to matters of education. In particular, I would like to thank Francie for the work she has done on behalf of the Arrowsic community. Prior to her service on the RSU1 Board she was a member of the Arrowsic School Board. She was also the long-time president of the Georgetown PTA. Personally, I found Francie to be a wonderful friend, mentor and voice of

reason during some of the more contentious Board discussions. She represented Arrowsic well.

The other large issue facing the district is the looming budget shortfall we are looking at for next year. Based upon a reduction in State subsidy, combined with rising operating costs, the district will need to raise an additional \$1.6 million to just maintain current services. I alluded to this situation in the last newsletter, but it bears repeating. Unless the region is willing to bear tax increases, RSU1 will have to make some deep cuts to continue operating with all existing programming in place. Currently we have organized a "Big Ideas" committee made up of teachers, administrators, community members and Board members to examine what can be done to weather the storm. A short survey will be going out to parents asking them what services they value in the system and what they are willing to forego. We are trying to find an economical way to also deliver the survey to the greater community, but the dialogue needs to begin now: what do you value in our schools?

The Board has also established its goals for the next year. Three continuing goals are: strengthen communication with the community, focus on long-term fiscal management in the RSU, and support high levels of student achievement. Under each of these three broad goals we have specific measures we intend to take to

Continued on page 4

ARTICLES NEEDED — TELL US WHAT IS GOING ON

The Arrow will be produced on a regular basis;
arriving at your doorstep in the months of

February May August November

Due dates will be posted at Town Hall
Questions?

Please contact Quinn Blaiklock peacefulquinn@gmail.com

From The Solid Waste Committee

New in January 2011 at the town shed

1) We now accept any clean scrap metal pieces under 50 pounds and under 4 feet long each. For larger pieces of scrap call John at 751-1550 to schedule pick up or drop off.

2) Also in the shed, we have improved upon rechargeable battery recycling to include many household battery types and small electronics. Here are the details:

Battery Recycling!

“The Big Green Box” will be in the Shed by the Town Hall for the following types of batteries:

- Nickel Cadmium (NiCd)
- Nickel-Metal Hydride (NiMH)
- Alkaline & Zinc-Carbon (Zn)
- Non-spillable Lead Acid (Pb)
- Lithium-Ion (Li-ion)
- Primary Lithium (Non-Rechargeable)

*Note: Limit to size of Lithium Batteries: the content of each cell can be no more than 5 grams; and/or the total lithium content of each battery can be no more than 25 grams.

**Batteries containing a free-flowing electrolyte are NOT acceptable (ie. automotive batteries)

Electronics accepted in The Big Green Box:

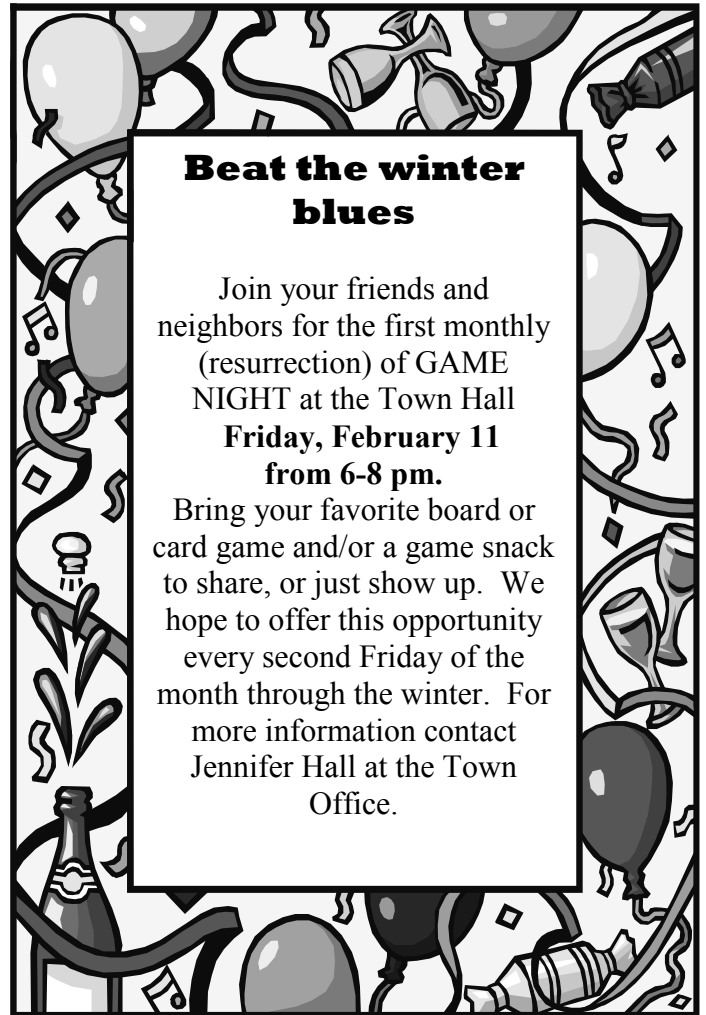
- Cell Phones and PDAs
- Power Tools
- Cameras
- Laptops
- MP3 Players
- Computer Accessories
- Cell phone accessories

Questions? Please contact Roz McLean 386-0179

Thank you to Gretchen Sibley for bringing “The Big Green Box” to our attention.

Upcoming Spring Events

Roadside cleanup: Past efforts in sorting material for recycling or reuse out of the roadside trash has proven to be worthwhile. We will continue our sorting efforts this year. Household Hazardous Waste: Arrowsic will participate in the annual collection event at Bath DPW garage this May. Date TBA.



TRASH & RECYCLING CALENDAR 2011

JANUARY 14* 28*	FEB. 11* 25*
MARCH 11* 25*	APRIL 8* 22*
MAY 6* 20*	JUNE 3* 10 17* 24
JULY 1* 8 15* 22 29*	AUGUST 5 12*
	19 26*
SEPT. 9* 23*	OCT. 7* 21*
NOV. 4* 18*	DEC. 2* 16* 30*

*Denotes that curbside recycling is also picked up

Recycling is mandatory!

(and a great idea! Have you seen the landfill?)

Please no bulky items or hazardous waste.

Trash/Recycling questions/Comments/ Contact
John Hinds, Judy Kahrl, Roz Mclean, Liz Parker
Ware, or Damian Sokol.

Continued from page 2

accomplish them. From a communications standpoint, we are trying to update and maintain school websites in order to keep information flowing to the community. Fiscally we are establishing a facilities management plan, working with administrators as they build their budgets and determining whether or not programs are adequately funded, as well as seeking grant writing support. From a student achievement perspective we are trying to stay abreast of new initiatives, support reading and literacy programs in the school, review our current math curriculum and develop and implement new drop-out prevention strategies.

Although I have left out many of the specific things that are going on in RSU1, I have tried to highlight some of the major developments we have experienced in the past couple of months. If you have any questions or comments about what is going on in RSU1, do not hesitate to contact me or Alan Walton (or any other Board Member, for that matter).

All the Best,

Tim Harkins, RSU Board Member District 3

(Arrowsic – Bath – Woolwich) Timharkins3@aol.com



**A Huge Thank you to Don Hudson
and Phine Ewing
for a lovely Solstice Party!**

It took several tries to light the sun, but once its beauty was unveiled, it burned on and on. So many people were there to celebrate the return of the sun to our Northern island, making this a wonderful gathering of all ages.

Thank you again for hosting, entertaining, and gathering on this special darkest and longest night of the year!

Continued from page 1

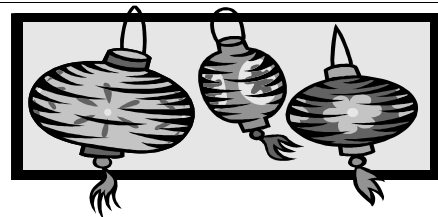
A special note about cell phones and their batteries: In 2008 Maine began requiring all cell phone companies to offer collection and recycling services for cell phones. There are 285 million wireless subscribers in the US. Americans purchase a new cell phone every 9-18 months which means 150 million cell phones are discarded annually. Many of them can be refurbished, reused or ultimately recycled. Most cell phone batteries have a 3-5 year life span.

For more information check out

Goodwill and Dell have partnered to provide recycling for all computer equipment, peripherals, cables, printers etc. in any condition. Just bring the electronics to the Goodwill Store in Topsham and you are done!

We Can Make a Difference!

- 1) Use hand operated tools
- 2) Switch to rechargeable batteries
- 3) Recycle cell phone at any cell phone store www.thewirelessalliance.com
- 4) Bring spent rechargeable batteries to the RBRC box in the Recycling Shed
- 5) Bring spent alkaline batteries to the TOXCO Big Green Box in the shed
- 6) Recycle electronics at the Topsham Goodwill <http://reconnectpartnership.com>



**Chinese New Year
Begins February 4th**

**Welcome Back to the
Year of the Rabbit!**

Check your birthdate—the New year is based on the Lunar Calendar, usually in late Jan to mid-Feb.
1927, 1939, 1951, 1963, 1975, 1987, 1999, 2011

A person born in the year of the Rabbit possesses one of the most fortunate of the twelve animal signs. The Rabbit, or Hare as he is referred to in Chinese mythology, is the emblem of longevity and is said to derive his essence from the Moon.

Wishing for storm windows on these cold winter nights?

Here is an opportunity to make your own thermal plastic window inserts. Join Bob Hardina of the Midcoast Green Collaborative at the Round Top Farm House in Damriscotta every Saturday morning from 9 - 12. Bring your window dimensions (inside jamb to inside jamb). You purchase the materials at cost (~ \$1.25 sf) there and get guidance on making and assembling the window in the workshop area. Wear warm clothing as the space is not well heated. These inside storm windows made of polyolefin shrink wrapped pine frames are easily installed and reusable for many seasons into the future. The film is near invisible. To see a photograph of a finished window go the Midcoast Green Collaborative web site: <http://midcoastgreencollaborative.org/>. These windows reduce air infiltration and add an approximate R-value of 2.3. The payback period varies from 7 months for single pane windows to 4 or 5 years for Energy Star low-E gas filled double-pane windows.

For more information contact Bob Hardina at 563-5236 or e-mail him at rhardina@tidewater.net.

Honors Garden A Beautiful Way to Get Involved!

In 2008, a group of interested community members created the Honors Garden Committee. The committee formed with a combined vision to create a garden environment surrounding our Town Hall and to provide an opportunity for community members, past and present, to honor special citizens, friends and loved ones through the dedication of a tree, shrub, or other planting. Betty Wilson, the driving force since the Committee's inception, recently stepped down as its chair and her leadership is missed. The committee is currently reorganizing and making plans for the future. These plans include expanding community participation in the garden. If you are interested in becoming involved in the garden or honoring someone with a planting, please contact one of the committee members listed below. The next meeting of the committee is scheduled for **March 22 at 7:00 at the Town Hall**. All are invited to attend.

Ann Ater: 443-1519 sunn@awi.net

Marty Hill: 443-1257

fredhill.martyhill@myfairpoint.net

Deirdre Barton: 442-8559 deirdredb@gmail.com

Milly Stafford: 443-5832

Bob Rogers: 443-1728 bobojanice@yahoo.com

SAGArrowsic

Each town participating in RSU1 is mandated to have a school advisory group (SAG) regardless of whether or not they have a school (as in the case of Arrowsic). This committee, appointed by the Selectmen, is presently in need of two additional members to join Lisa Holley and Barbara Boyce.

The SAGArrowsic duties, in general, are:

- To communicate regularly about current local education issues to the Selectmen and the Town.
- To provide Information to parents as needed and provide a link between parents, the RSU and the school board.
- To gather and provide information regarding Arrowsic school children for town records.

Members should represent a broad base of community members including parents, students, and other interested community members.

For more details regarding duties and responsibilities contact any of the Selectmen. Please consider volunteering for this important committee.

A helpful tip from your friendly Animal Control Officer:

Available now: dog licenses for 2011!

Your dog's current license will expire on
December 31, 2010.

Late fee is \$25.00 by new 2010 law.

ADVERTISEMENTS

ANDREA GALUZA RE/MAX Riverside
Broker/REALTOR "AWARD WINNING BROKERYOUR
ARROWSIC ISLAND CONNECTION"
1 Bowdoin Mill Island, Ste 101
Topsham, ME 04086 agaluz@remax.net
207-725-8505 ext. 111 207-751-9701 Cell

Car and Truck Registrations

December 2010

BRAWN, PAMELA
 BROWN, PAUL
 BRYANT, ELIZABETH
 CAMPBELL, SHERMAN
 CHAPIN, BARTON III
 DAUPHIN, ASHLEY
 DAVIS, SHAWN
 ELWELL, DERECK
 ELWELL, ROBERT
 ELWELL, ROBERT A.
 GALUZA, JAMES
 GILES, SAMUEL
 GILLIAM, BRET
 GOWELL, R. RANDALL II
 HARKINS, TIMOTHY III
 KALISH, ROBERT
 KANE, JEAN
 KNOWLES, ROBERT JR.
 LEVESQUE, REBECCA
 MCLUER, PAULINE
 PALMER, RAIG
 PATZLAFF, GARY
 PUFF, DAVID
 ROLLINS, ELIZABETH
 SHAW, JOY
 SKILLINGS COLEMAN, ELIZABETH
 SULLIVAN, MICHAEL
 THEODORE, STEVEN
 WOODRUFF, PETER

January 2011

ARSENAULT, MARK
 BEUTTELL, LYNN
 BRIGGS, JANE
 BROWN, CHARLOTTE
 BURKE, JOANNE
 CARLETON, JAMES
 CASSELL, ANN
 ELWELL, JENNIFER
 FOX, JILL
 GILL, DEBORAH
 GILLIAM, BRET
 KM ROBBINS CONSTRUCTION, LLC
 KANE, MICHAEL
 MALEY, KENNETH
 MORSE, DIANNA
 NEILSON, PIA
 PUFF, KATHLEEN
 SANTERRE, ROBERT
 SANTERRE, ROBERT
 STEPHENSON, MARK
 STUART, SCOTT
 SULLIVAN, TIMOTHY
 TEXTOR, KENNETH
 TOLAN, JAMES
 WARE, DOUGLASS
 WOOD, JOHN

February 2011

BASSETT, DEBORAH
 BASSETT, KEN
 BASSETT, KENNETH
 BASSETT, MICHAEL
 BEANE, JEREMY
 BEMA, ANTHONY
 BEUTTELL, JEFFREY
 BRETT, CHRISTOPHER
 BROOKS, DAVID
 BRYANT, DONALD
 BRYANT, DONALD
 CALLUZA, JAMES
 CARLTON, ANN
 CARLTON, DALE
 COLLIER, SUSAN
 COSSART, EDWARD
 CUNNINGHAM, PAUL
 DELAN, MOLLY
 DEMERS, THOMAS JR
 DETWILER, BRIAN
 ELWELL, BRIAN
 ELWELL, BRIAN
 ELWELL, NORMA
 ELWELL, ROBERT
 FORREST, ROBERT
 GRILL, CHRISTOPHER
 GUNSTON, KENNETH
 HALL, STEVEN
 HANSON, JUNE
 HIGGINS, RICHARD
 HINDS, JOHN
 HOLLEY, LISA
 JAMES, JENNY
 JAWDAT, MARCUS
 JORGENSEN, MARK
 JORGENSEN, MARK
 JORGENSEN, MARK
 JORGENSEN LANDSCAPING INC
 KM ROBBINS CONSTRUCTION LLC
 MACMAHAN, JOSEPH
 MALEY, KENNETH
 MCCLEAD, SETH
 MOUNT, PAMELA
 NELSON-WALLING, GRAHAM
 NODINE, ANNIE
 OLDE KENNEBEC WOOD COOKERY
 ORR, ELWARD
 ORR, EDWARD
 PARADIS, RAYMOND
 PELLETER, ROLANDE
 PINETTE, JEFFERY
 POPE, RALPH
 RHYTHMIC CABLE INC
 RHYTHMIC CABLE INC
 RHYTHMIC CABLE INC
 SHAW, RON
 SHOVER, EVELYN
 SHULTZ, ROBERT
 SPENCER, JAMES
 STARBIRD, RYAN
 TARBOX, CHARLES
 TEXTER, KENNETH
 THEODORE, STEVEN
 THOLIAS, ROBERT
 THOMAS, KATHRYN
 WALSH, THOMAS
 WEISS, DAVID

Town of Arrowsic
 340 Arrowsic Road
 Arrowsic, ME 04530

Resident
 HC 33
 Arrowsic, ME 04530